

# Data sheet

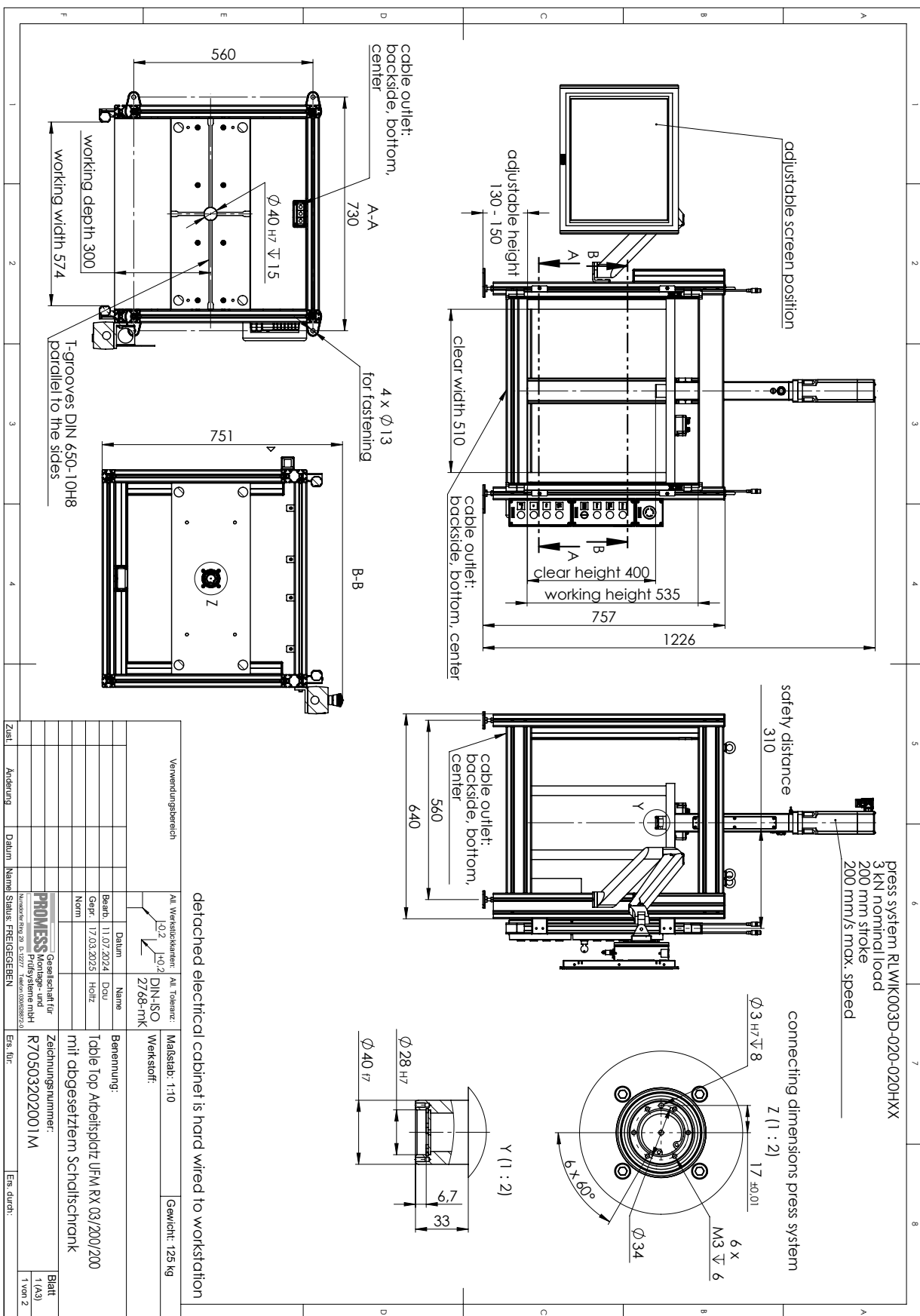
## Table Top Workstation UFM RX 03/200/200

with separate control cabinet | Art. No. R70503202001M

Performance data	
Rated Force	3000 N
Stroke	200 mm
Nominal speed	200 mm/s
Service life / operating life	10 years
Max. shutdown time (time to safe condition)	0,2 ms – without tools
Sound emission	Sound pressure level $\leq$ 85 dB
Mechanical data	
Dimensions (H x D x W) W and D – with PC support arm extended to maximum	1225 x 1330 x 1550 mm
Weight incl. cabinet	125 kg
Drive carrier	4-Column frame
Control cabinet (H x D x W)	800 x 400 x 600 mm
Electrical data	
Mains voltage	400 VAC +/-10%
Frequency	50 Hz +/-10%
Power input	11,9 kVA
Environmental data / Environmental conditions	
Temperature range	Operation: +/-0°...+40°C Storage: -10°...+50°C
Protection class for switch cabinet	IP 54
Area of application	Industrial environment
Permitted tools	
Minimum distance required from moving parts	200 mm
Max. tool weight	30 kg
Power generator / drive	
Type	Line5s
Power	0,88 kW
Rotary encoder	
Type	SINCOS
Accuracy	45 seconds of arc
Servo amplifier	
Type	UNIDRIVE M702



For more efficiency.



detached electrical cabinet is hard wired to workstation

Verwendungsbereich		Alt. Werkstoffkennz.		Alt. Toleranz:		Maßstab: 1:10		Gewicht: 125 kg	
		H02 / H02		DIN-ISO 2768-mK					
Datum		Name		Berechnung:		Zeichnungsnummer:		Blatt	
Baubr. 11.07.2024		Docu		Table Top Arbeitstisch UFM RX 03/200/200		R705032020011M		1 (A3)	
Gepr. 17.03.2025		Holitz		mit abgesetztem Schrittschrank				1 von 2	
Norm		Gesellschaft für		Zust.		Ers. durch:			
PROMESS Montage- und		Prüfsysteme mbH		Änderung		Datum		Name	
Nunsdorfer Ring 29, D-12277 Berlin		www.promessmontage.de		Freigegeben					