

Data sheet

Assembly Press

Assembly Press Precision 0,2-60-250

Main functions	
Nominal force (push/pull)	0,2 / 0,2 kN
Stroke	60 mm
Nominal speed	250 mm/s
Nominal acceleration	6000 mm/s ²
Dwell time of nominal load	min. 4 s
Weight mechanics (NGX/HGX)	5,5 / 0 kg
Max. tool weight*	0,5 kg
Force	
Measuring principle	Piezo
System accuracy**	<0,5% with 2-point-calibration / <0,1% with characteristic map
Amplifier PDM-S / (WxHxD)	Aluminum die-cast / 125 x 80 x 57 mm
Output signal	digital
Protection class	IP40
Power supply	19...36 VDC (3 W)
Distance measuring	
Feedback device	Resolver
Repeatability of positioning***	< 0,01 mm
Servo amplifier	
Type	M702-032-00050-A
Dimensions (WxHxD)	83 x 382 x 200 mm
Mains voltage	AC 200 V ... 240 V, +/-10 %
Cable cross section (input)	IEC 1,5 mm ² / UL 14 AWG
Cable cross section (output)	IEC 1,5 mm ² / UL 14 AWG
Protection class (DIN 60529)	IP20
Weight	4 kg

Servo amplifier	
Recommended protection	IEC 16 A gG UL/USA 20 A CC or J
Temperature range	-20 °C...+50 °C
Power loss	99 W
Line filter	
Weight	1,9 kg
Cable cross section (input)	2,5 mm ² / 16 AWG
Power loss	6,7 W
Dimensions (WxHxD)	75 x 215 x 41 mm
Protection class (DIN 60529)	IP20
Interfaces	
PC	Ethernet
PLC (24 VDC)	3I / 4O
PLC Fieldbus	Profibus, Profinet, EtherCat, EtherNet/IP, Modbus/TCP
Extension Options	PDM-A: 4x analogue / PDM-P: Piezo / PDM-I/O: 16I / 16O

* if using a holding brake: max. permitted tool weight = 10% nominal load. For a heavier tool weight please consult PROMESS.

** Force measuring system, static calibration in relation to the reference system / *** at thermal steady-state

All nominal values refer to 400 V mains voltage.

Tilting of the plunger due to the tool weight must be considered for a horizontal installation.

Radial forces must not exceed 8% of the nominal force of the unit.

If the ratio of pause time / cycle time is < 0,5, please consult PROMESS.

Order code: **PR5IP002-006-025**

Motor position

I: Inline / P: Parallel

Measuring principle:

D: Strain gauge / P: Piezo

Nominal force in 1/10 kN

Nominal stroke in cm

Nominal speed in cm/s

Brake:

H: Holding brake / S: Safety brake

N: without brake

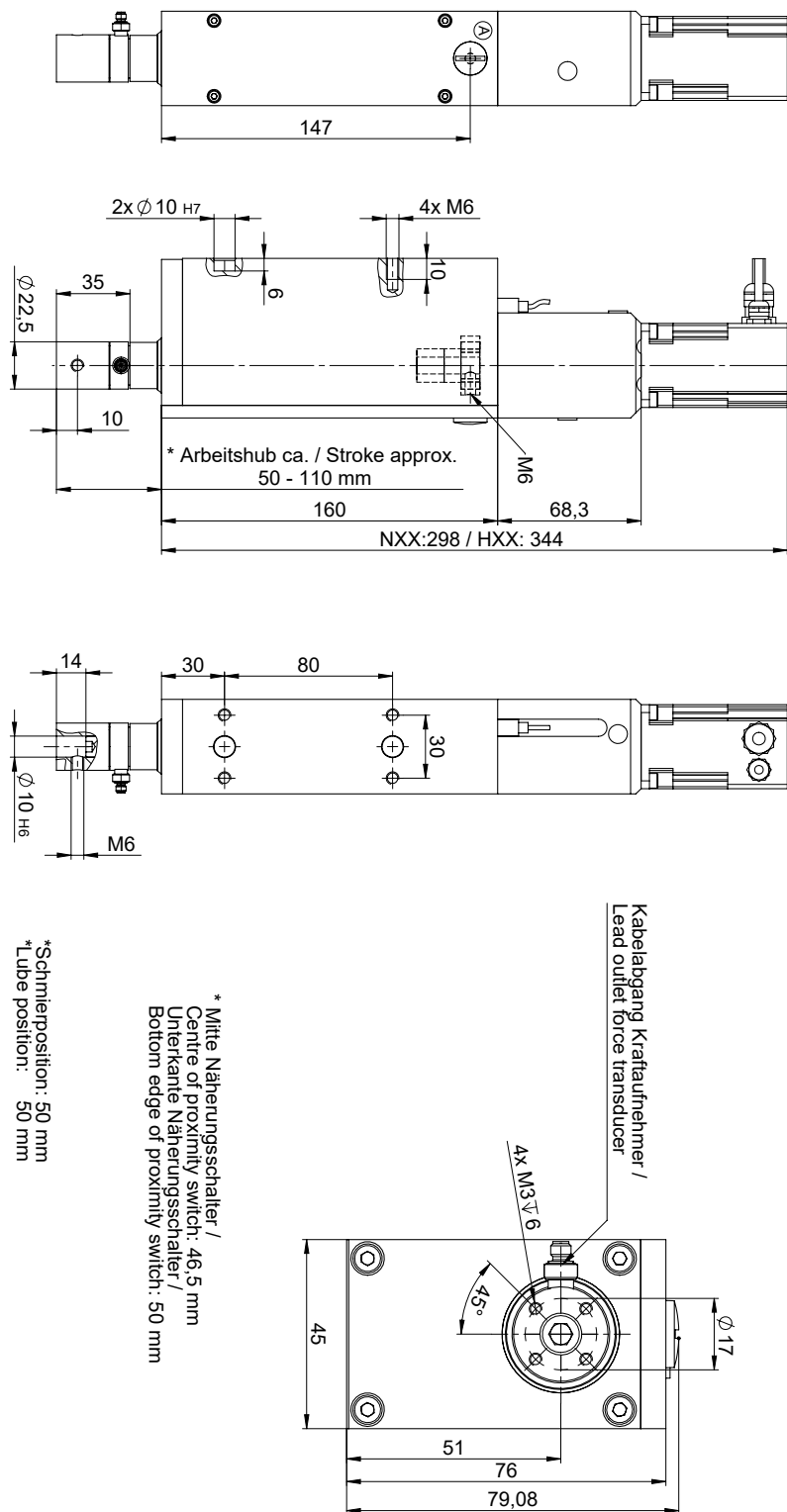
Special type:

GX: Basic version / XX: Special type

For more efficiency.

XX-folgende Buchstaben haben keine Auswirkungen auf die Anschlussmaße
 following letters have no effect to the connection dimensions

PR51P002-006-025NXX / HXX



[06/2020 technische Änderungen vorbehalten]

Zum Schmieren des Kugelgewindetriebes wird der Gewindestopfen (A) in der Schmierposition des Stempels abgeschraubt und ein Schmiernippl in die M6 Schmierbohrung des KGT's eingeschraubt. Anschließend wird der KGT mit 0,1cm³ Fett abgeschmiert. Schmierintervall 1000 h oder 250000 Hübe. Schmierfett: KLÜBER-ISOFLEX NCA 15

In order to lubricate the ball screw, move the ram to the lube position, remove the cap (A) and attach a grease nipple in the ball screw. Afterwards, lubricate the ball screw with 0,1cm³ grease. Lubricating intervals 1000 h or 250000 strokes.
 Used grease: KLÜBER-ISOFLEX NCA 15